

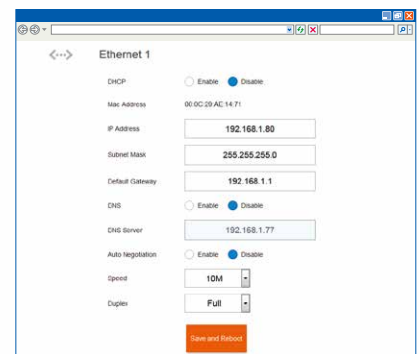
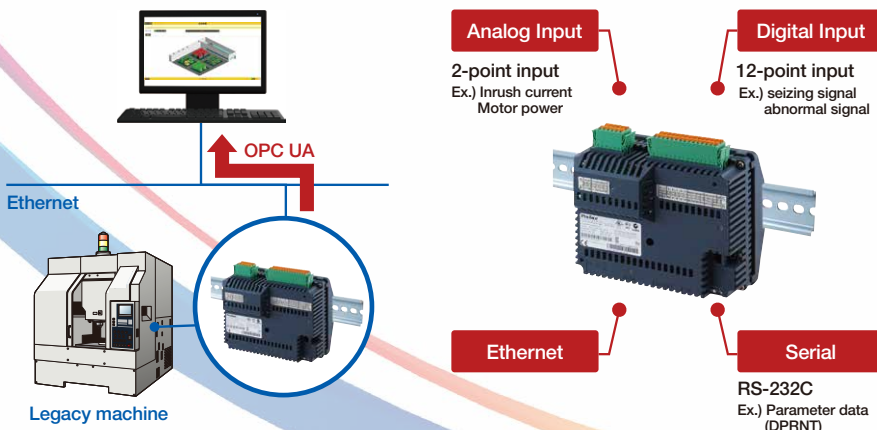
## Collect CNC data from legacy machines to MT-LINK*i* via Multi-Data Box.



Easily connect Legacy CNC machines to MT-LINK*i*.

Compatible with Serial (DPRNT) as well as I/O<sup>\*1</sup>. Acquire many types of data.

Configure main unit settings on a Web browser. No external software required.



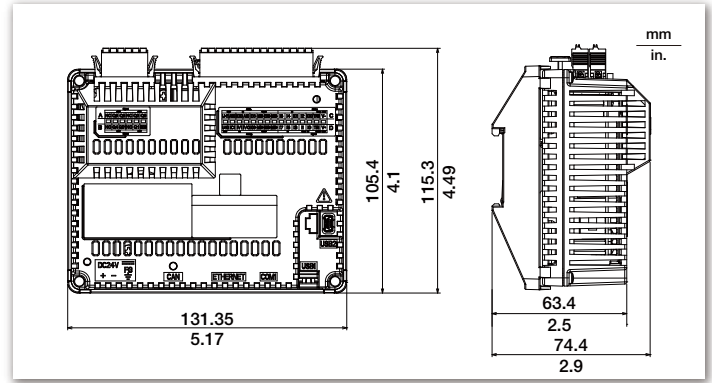
\*1 Only input (DI x12 / AI x2) can be used (Read-only). Outputs such as analog output are not supported. Special IOs (high-speed counter, pulse input/output, temperature input) are not supported.

# Multi-Converter (Multi-Data Box) for FANUC

## Specifications

Model		PFXLM4B01DAKFF
Rated Input Voltage		24 Vdc
Acceptable Voltage Drop		10 ms or less at 20.4 Vdc
Power Consumption		10.4 W or less
In-Rush Current		30 A or less at 28.8 Vdc
Ambient operating temperature	Horizontal installation	0 to 50 °C (32 to 122 °F)
	Vertical installation	0 to 40 °C (32 to 104 °F)
Surrounding Air and Storage Humidity		5 to 85 % w / o condensation (non-condensing, wet bulb temperature 39 °C (102.2 °F) or less)
Degree of pollution	IEC 60664	2
Vibration resistance	Mounted on a DIN rail	3.5 mm (0.138 in.) fixed amplitude from 5 to 8.4 Hz 9.8 m / s <sup>2</sup> (1 gn) fixed acceleration from 8.4 to 150 Hz
Serial (COM)		RS-232C / 485 Connector type: RJ45
USB		USB 2.0 (Type A) x1 USB 2.0 (mini-B) x1
Ethernet		10 BASE-T / 100 BASE-TX x1
Control	Digital Input	12 Points Standard Input sink and source
	Analog Input	2 ch analog inputs (13-bit)
External dimensions		W131.35 x H115.3 x D74.4 mm (W5.17 x H4.49 x D2.9 in.)
Weight		544 g (19.19 oz)

## Dimensions



## Compatible CNC

	I/O signal	RS-232 signal (DPRNT)**1
FANUC Series 0	✓	-
FANUC Series 15	✓	✓
FANUC Series 16 / 18 / 20 / 21	✓	✓
FANUC Power Mate -D / F / H	✓	✓
FANUC Series 16i / 18i / 21i	✓	✓
FANUC Power Mate i	✓	✓
FANUC Series 15i	✓	✓
FANUC Series 0i	✓	✓
FANUC Series 30i / 31i / 32i / 35i	✓	✓
FANUC Power Motion i	✓	✓
PLC and CNC other than the above	✓	-

\*\*1 Might not be compatible depending on configuration of CNC.

## Option

Product Name	Model	Description
FANUC CNC connection cable (5 m)	PFXZLMCBJR22	A serial communication cable for connecting this product to FANUC CNC.

## Setting Screens (on a Web browser)

### OPC UA Server Setting

### Digital Input Screen

### Analog Input Screen

### Serial Port Setting

## ⚠ WARNING

**HAZARD OF OPERATOR INJURY, OR UNINTENDED EQUIPMENT DAMAGE**  
 Before operating any of these products, be sure to read all related manuals thoroughly.  
**Failure to follow these instructions can result in death, serious injury or equipment damage.**

- For printing purposes, the colors in this catalog may differ from those of the actual unit.
- Actual user screens may differ from the screens shown here.
- Electrical equipment should be installed, operated, serviced, and maintained only by qualified personnel. No responsibility is assumed by Digital for any consequences arising out of the use of this material.
- All product names used in this catalog are the registered trademarks or trademarks of their respective companies.
- All information contained in this catalog is subject to change without notice.

**SCIGATE AUTOMATION (S) PTE LTD**

No 1 Bukit Batok Street 22 #01-01 Singapore 659592  
 Tel: (65) 6561 0488 Fax: (65) 6561 0588  
 Email: sales@scigate.com.sg Web: https://scigate.com.sg

Business Hours: Monday - Friday 8:30AM - 6:15PM

by Schneider Electric

Visit our website for more information.  
[www.proface.com](http://www.proface.com)

Global Headquarters Digital Electronics Corporation [JAPAN] Tel: +81-(0)6-6208-3133	North / South American Headquarters Pro-face America, Inc. [U.S.A.] Tel: +1-734-477-0600	European Headquarters Pro-face Europe B.V. [THE NETHERLANDS] Tel: +31 (0)23 55 44 099
-------------------------------------------------------------------------------------------	------------------------------------------------------------------------------------------------	---------------------------------------------------------------------------------------------